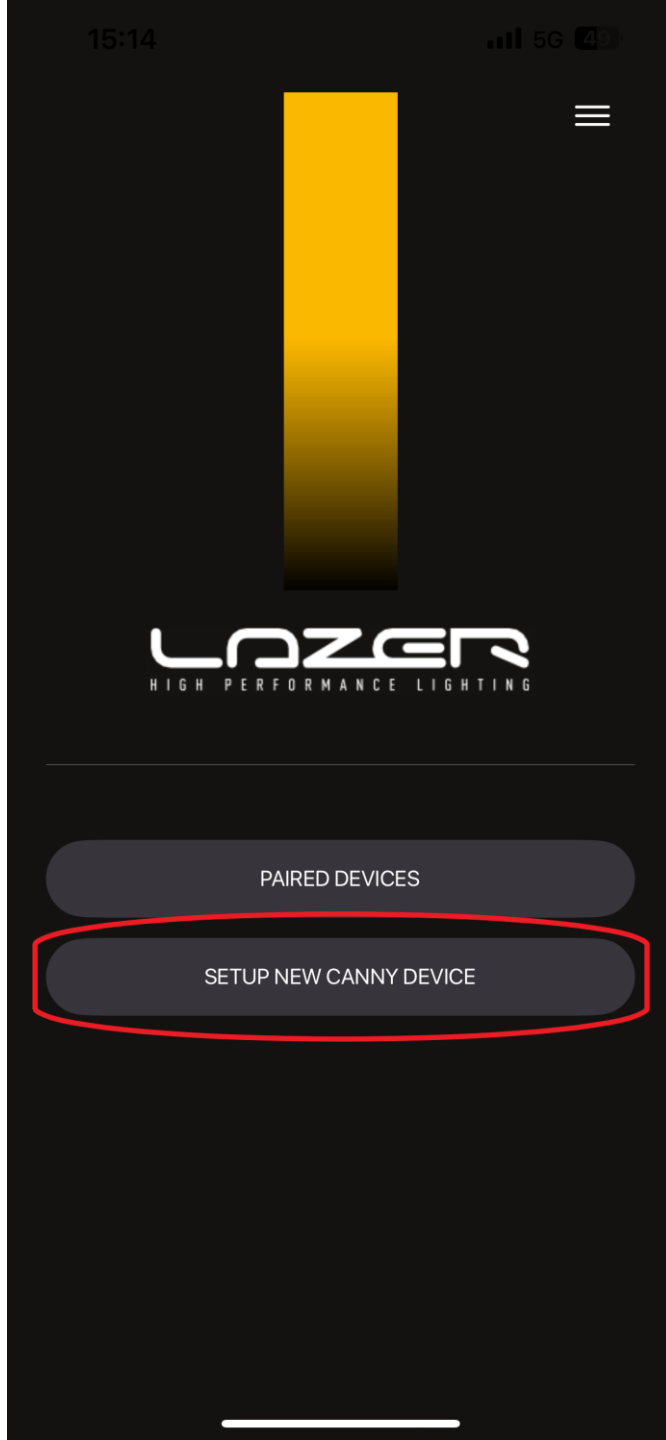


# Update CANNY to firmware 2.0.0 +

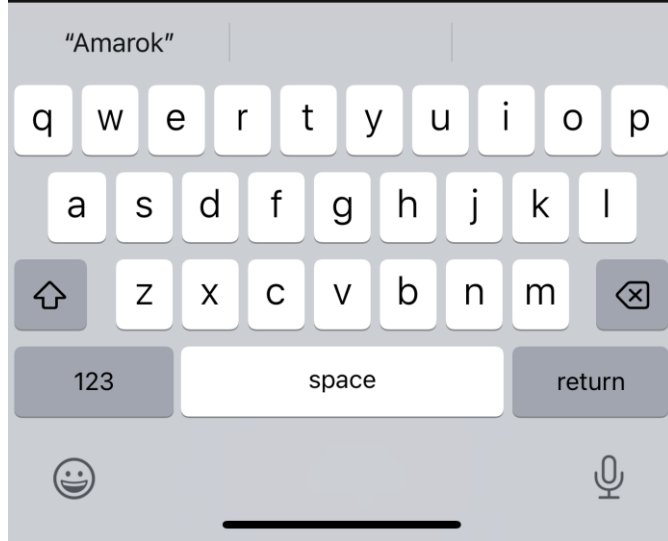
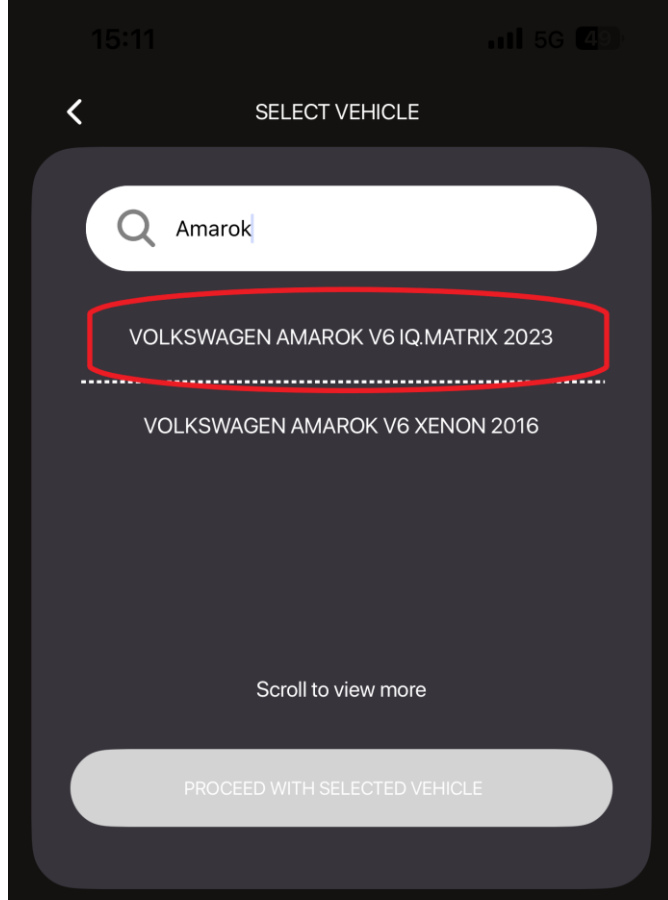
For use with VW Amarok 23+, Ford Ranger Level 3 & more



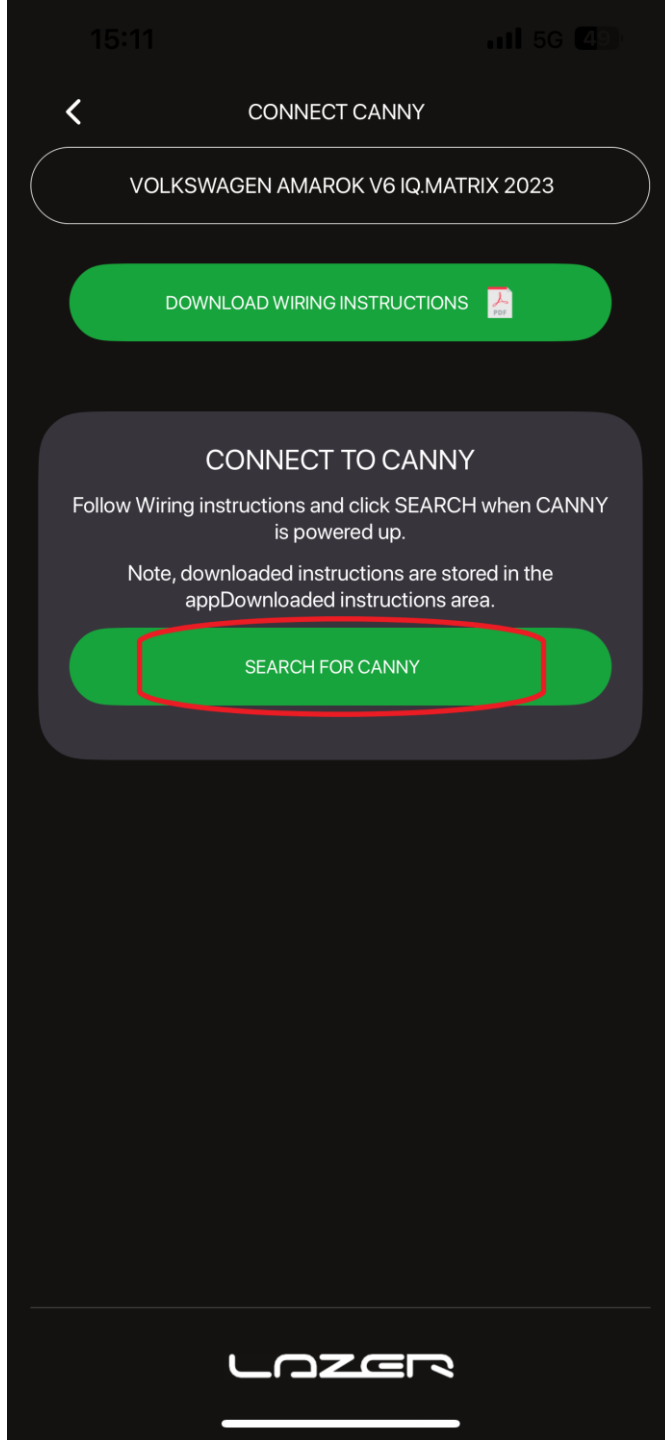
Open CANNY application, and select Setup New CANNY Device

This applies to if the device is brand new from the box, or if you have already received an error message during installation.

Manually type in the device serial number, or scan the QR code with the phone camera.



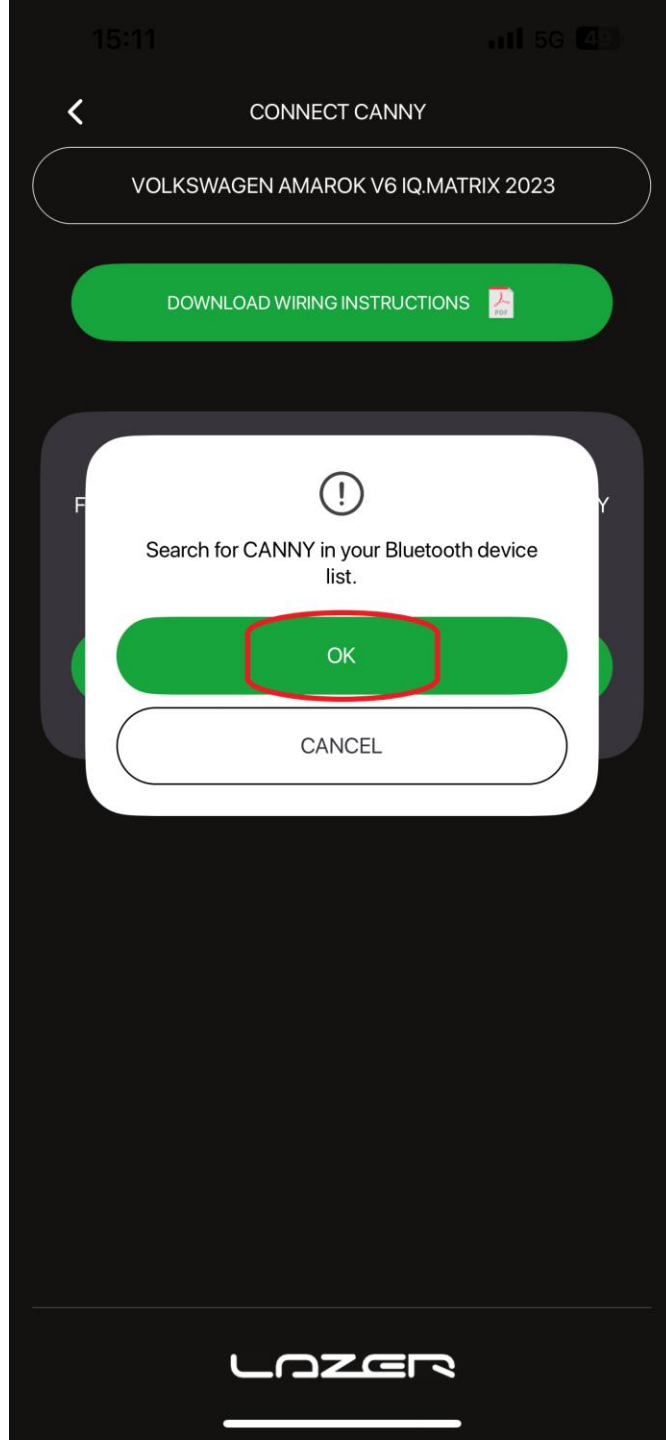
Select ANY vehicle from the list. In this case, we are updating the device to be used in a new Amarok with Matrix headlights.



Once you have selected a vehicle, you will now need to connect the phone to CANNY via Bluetooth.

The Bluetooth connection is ALWAYS made in the CANNY app. Do not use the phones Bluetooth menu.

Search for CANNY



Press OK for the CANNY app to start searching for the CANNY devices.

15:11

5G



VOLKSWAGEN AMAROK V6 IQ.MATRIX 2023

No Peripherals, press "SEARCH" to discover CANNY devices.



LAZER

Press search

15:11

5G



VOLKSWAGEN AMAROK V6 IQ.MATRIX 2023

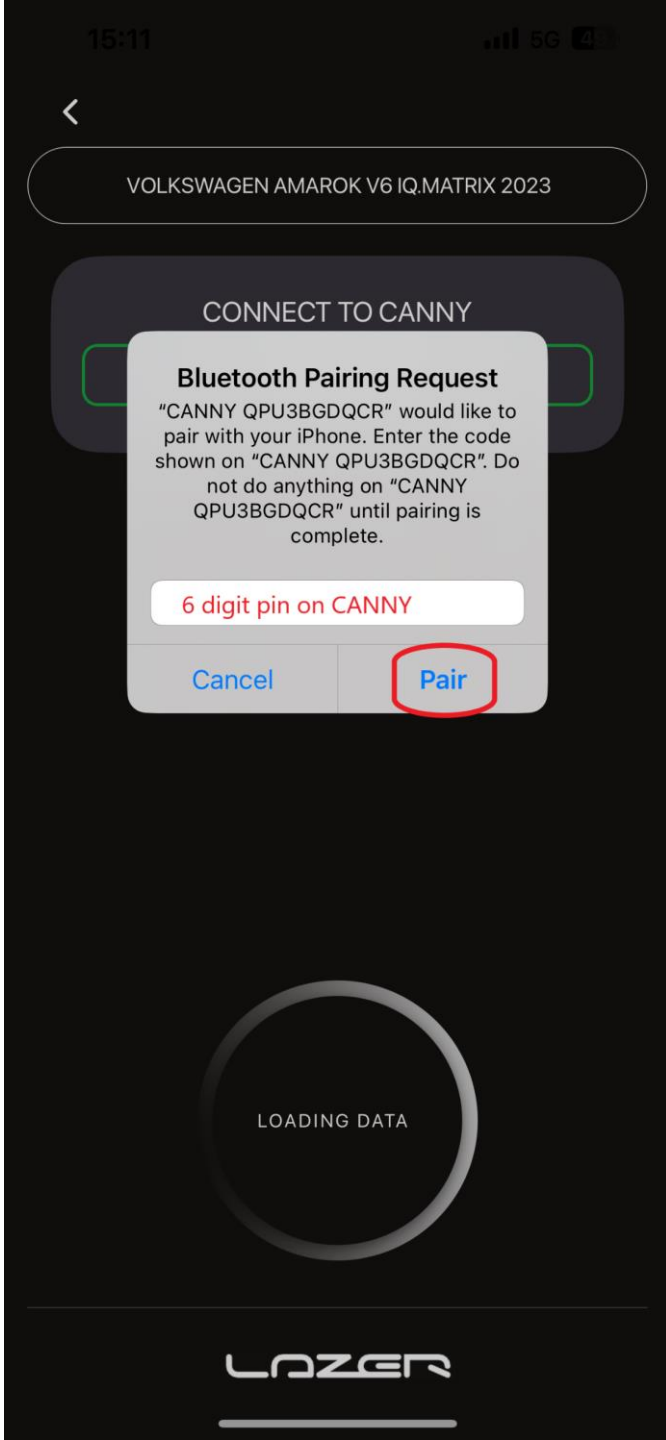
CONNECT TO CANNY

CANNY QPU3BGDQCR

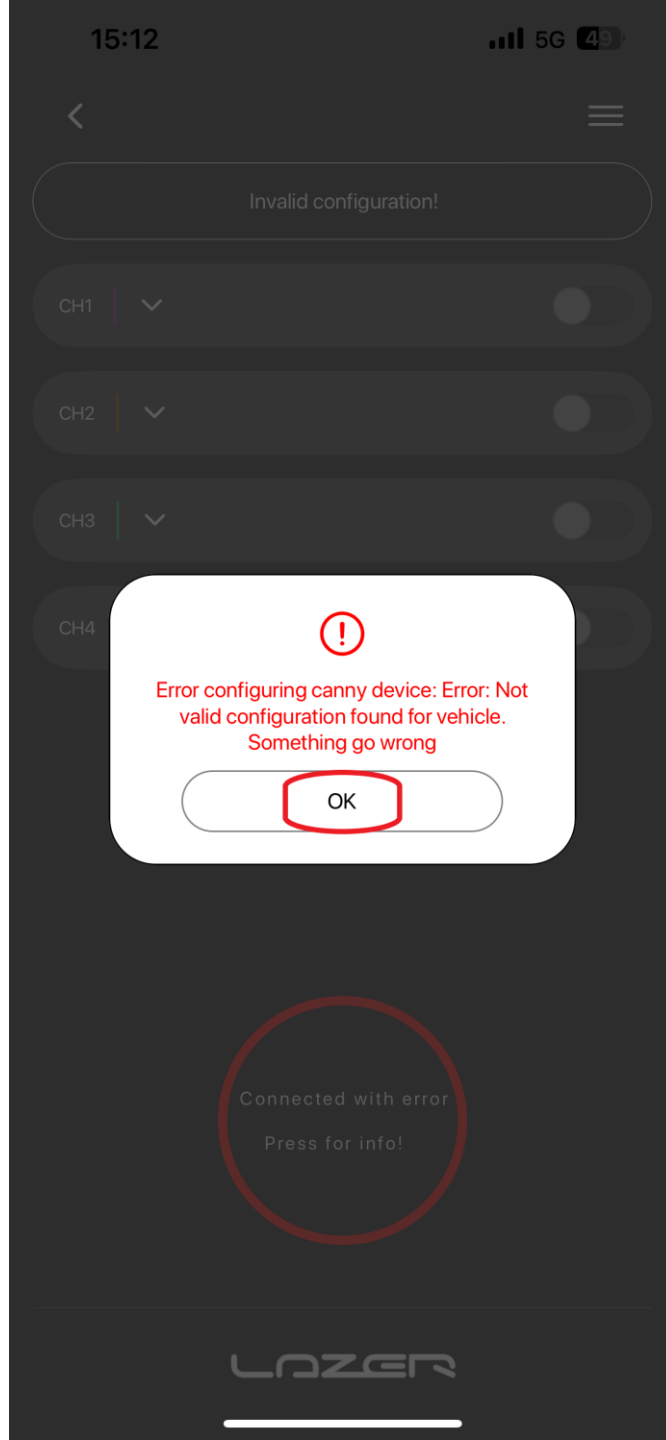
SEARCH

LAZER

Select the CANNY device you are looking to use

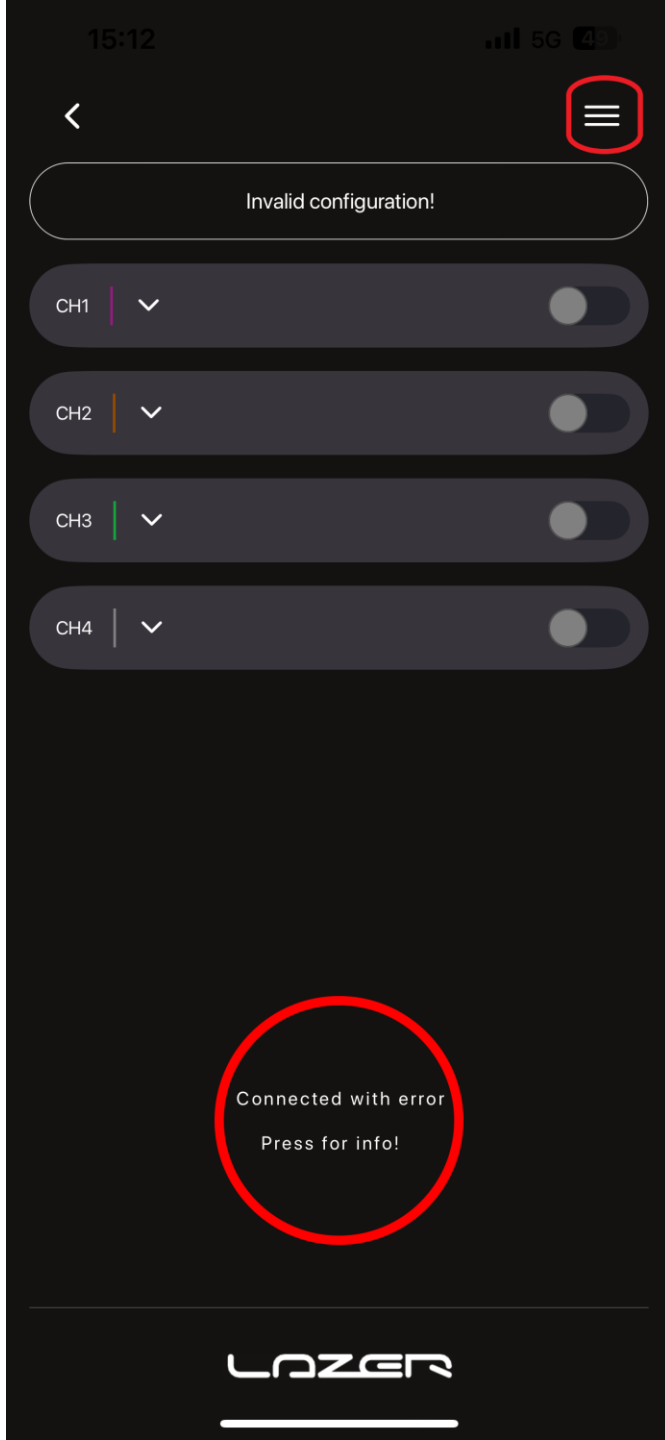


Input the 6 digit pin from the CANNY label to complete the Bluetooth pairing.

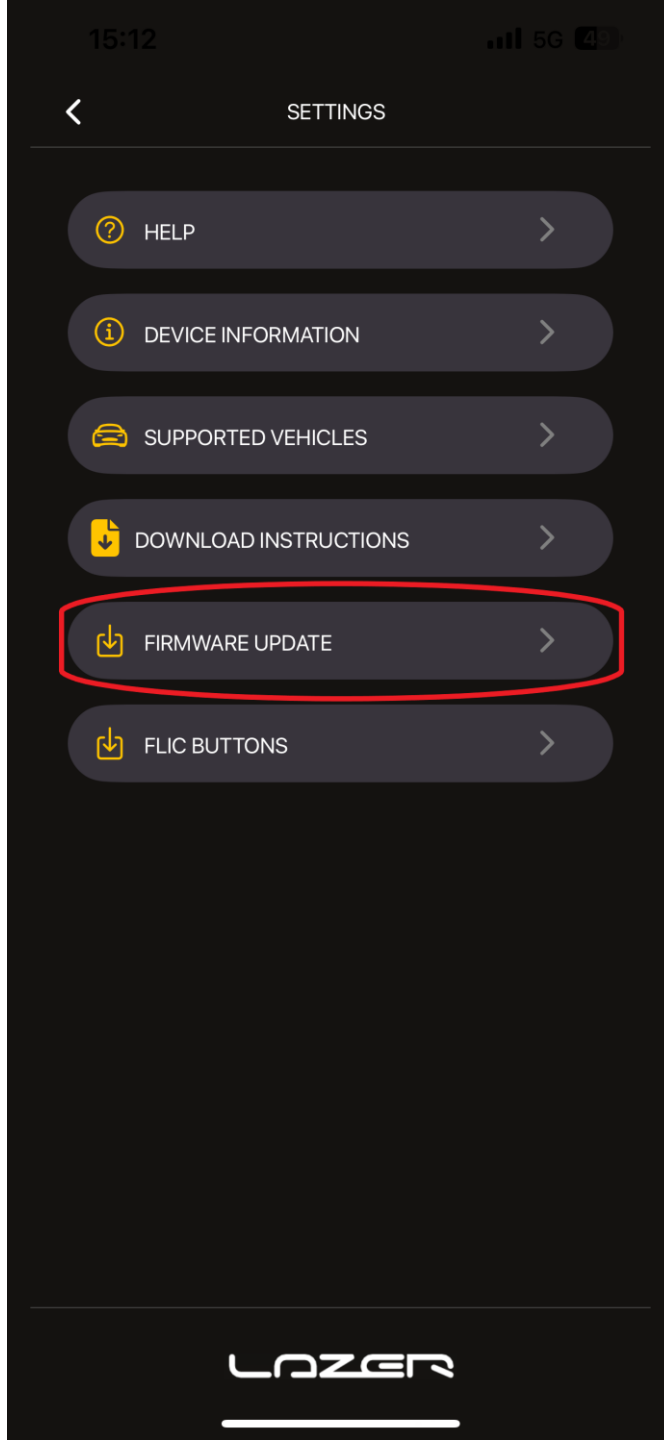


You may now receive this error, depending on the vehicle configuration you chose at the beginning.

Do not leave the CANNY app or go back at this stage.

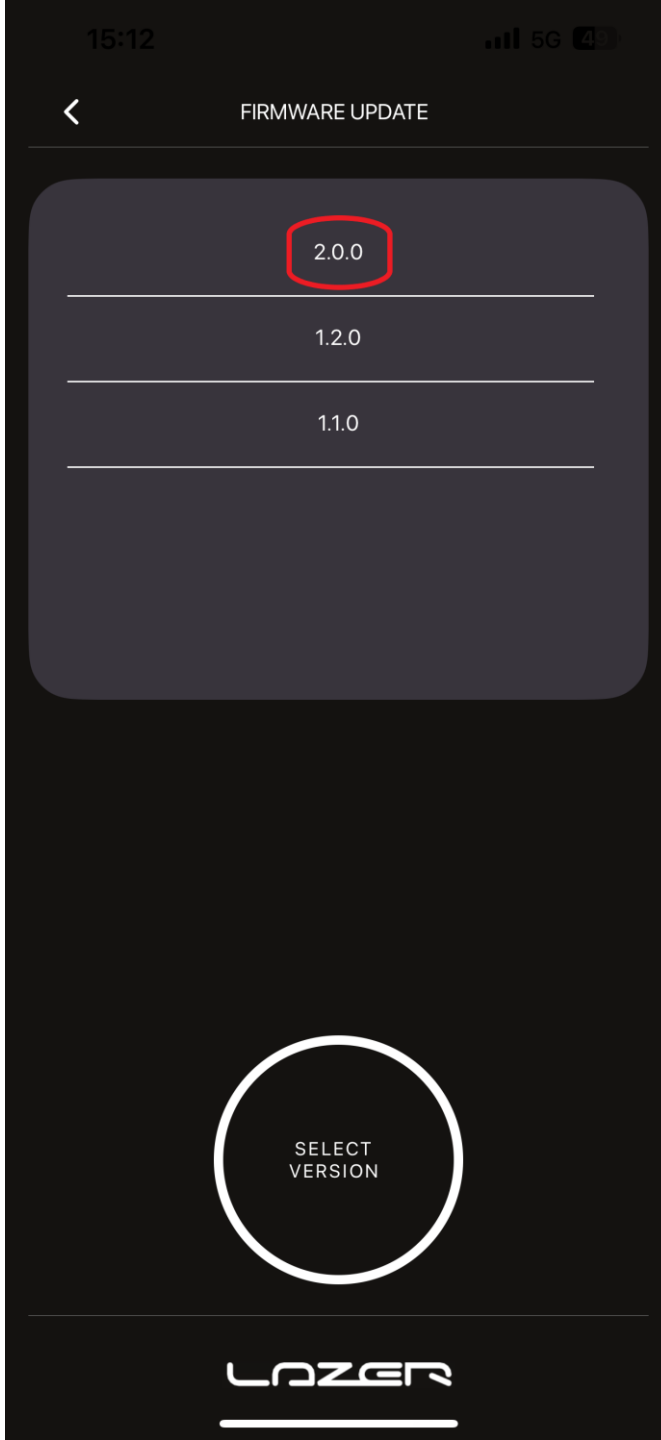


Select the menu tab at the top right of the page



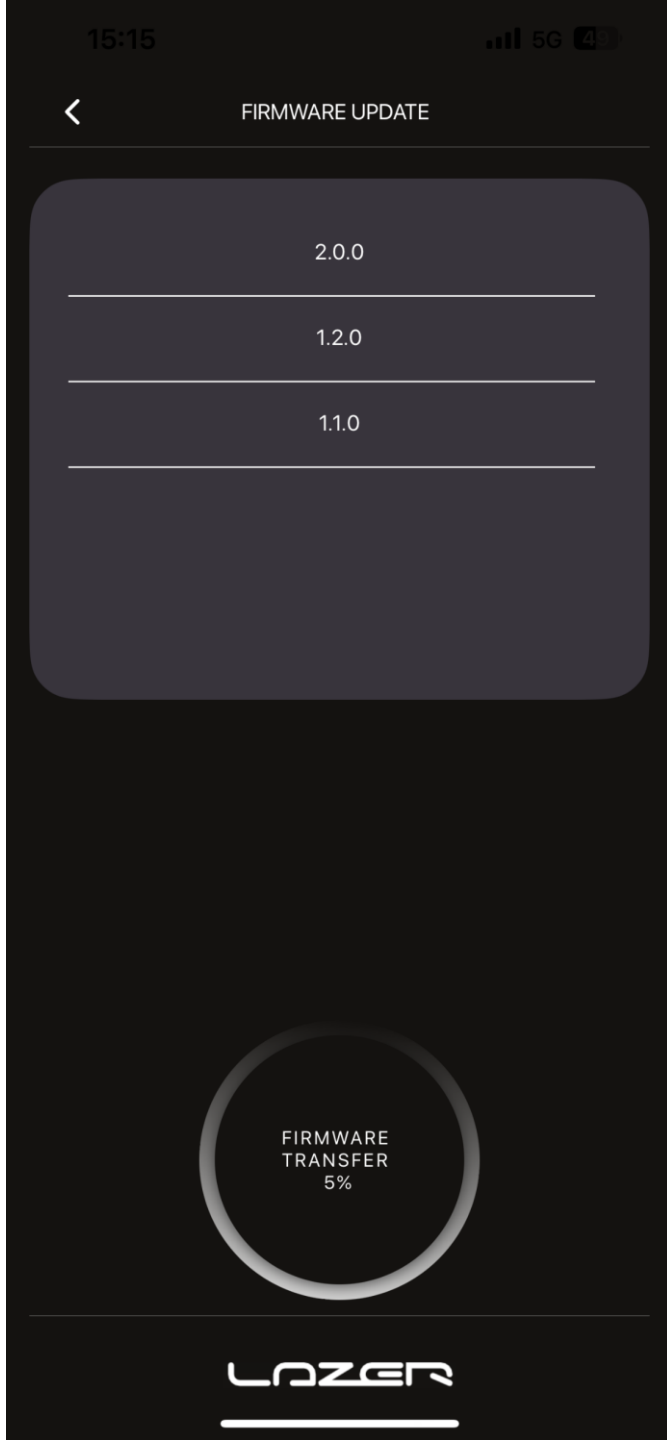
Select firmware update.

You can also check the current device firmware in the Device Information Tab.



Select new firmware to update the device.

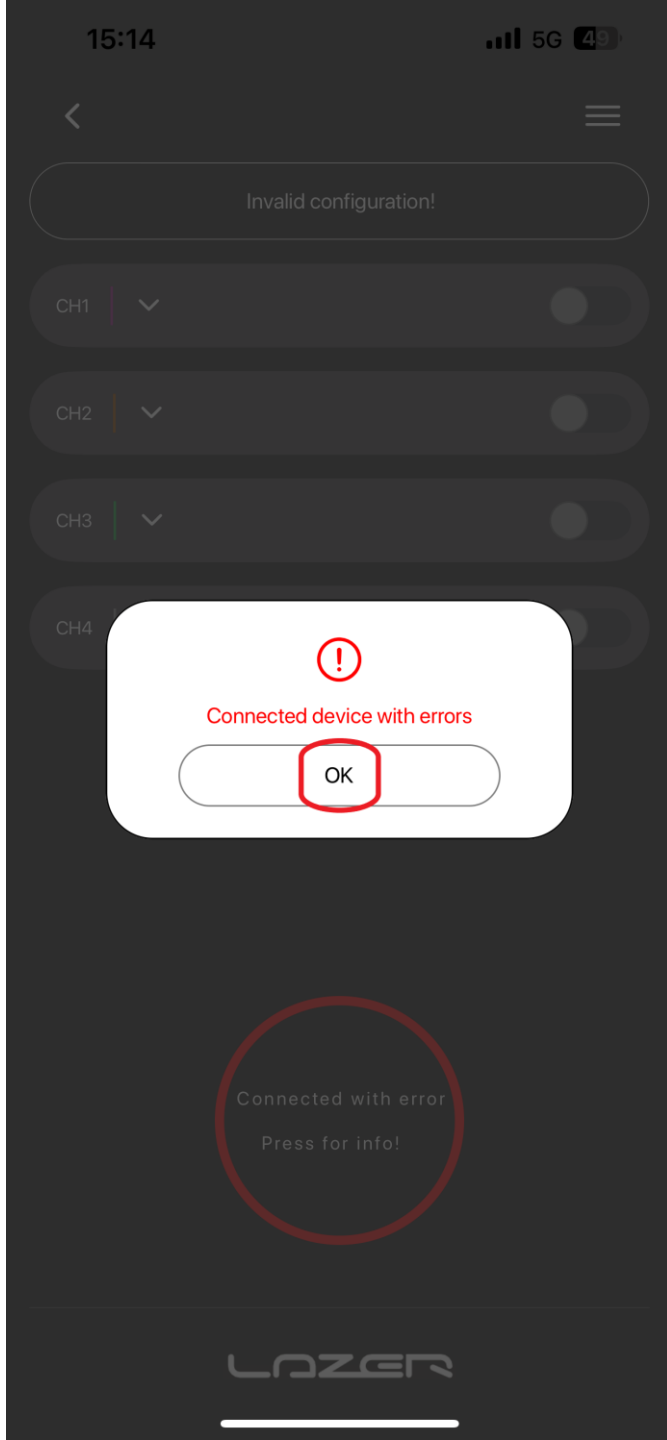
You will need to select at least 2.0.0, but we would suggest always going for the highest version available.



The firmware transfer progress percentage will be shown at the bottom of the page.

Once it gets to 100%, the progress spinner will continue whilst the firmware is applied to the device.

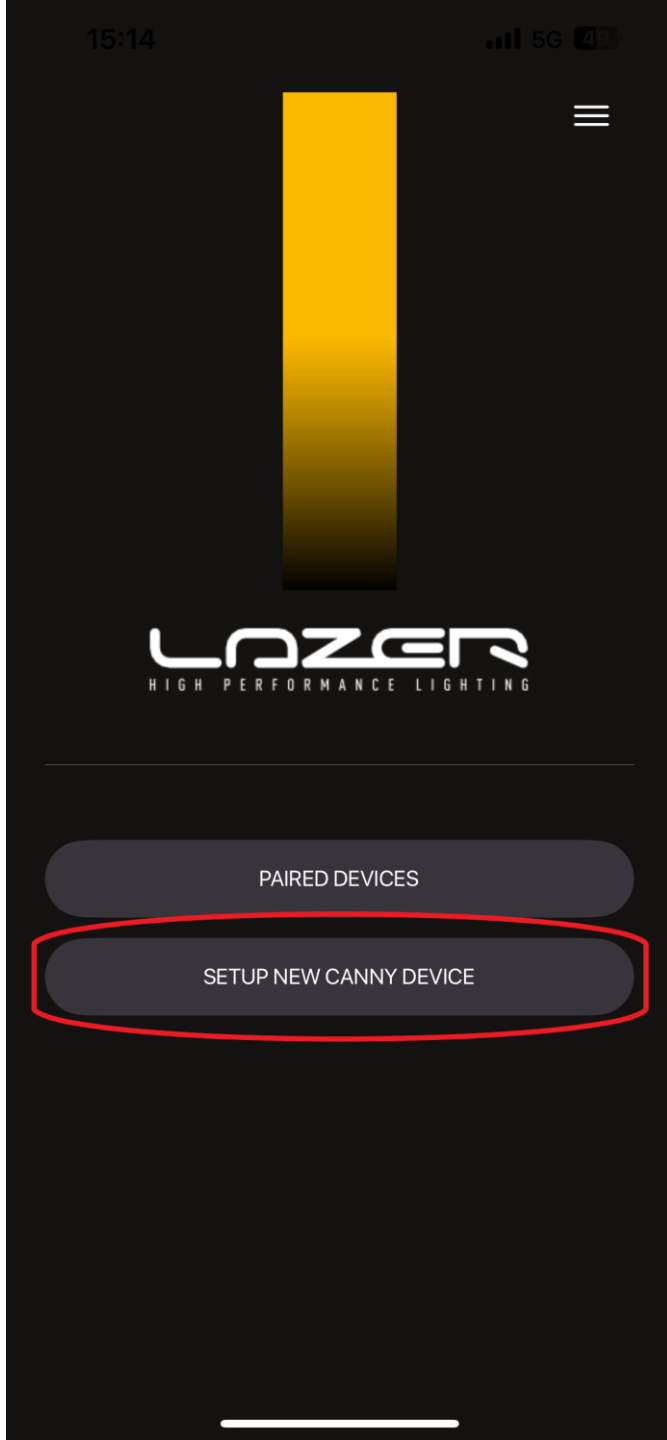
You do not need to do anything at this stage besides keep your phone open and unlocked.



The device will load back to the 4 output channels but will show an error.

It will show as an Invalid configuration, this is normal at this stage.

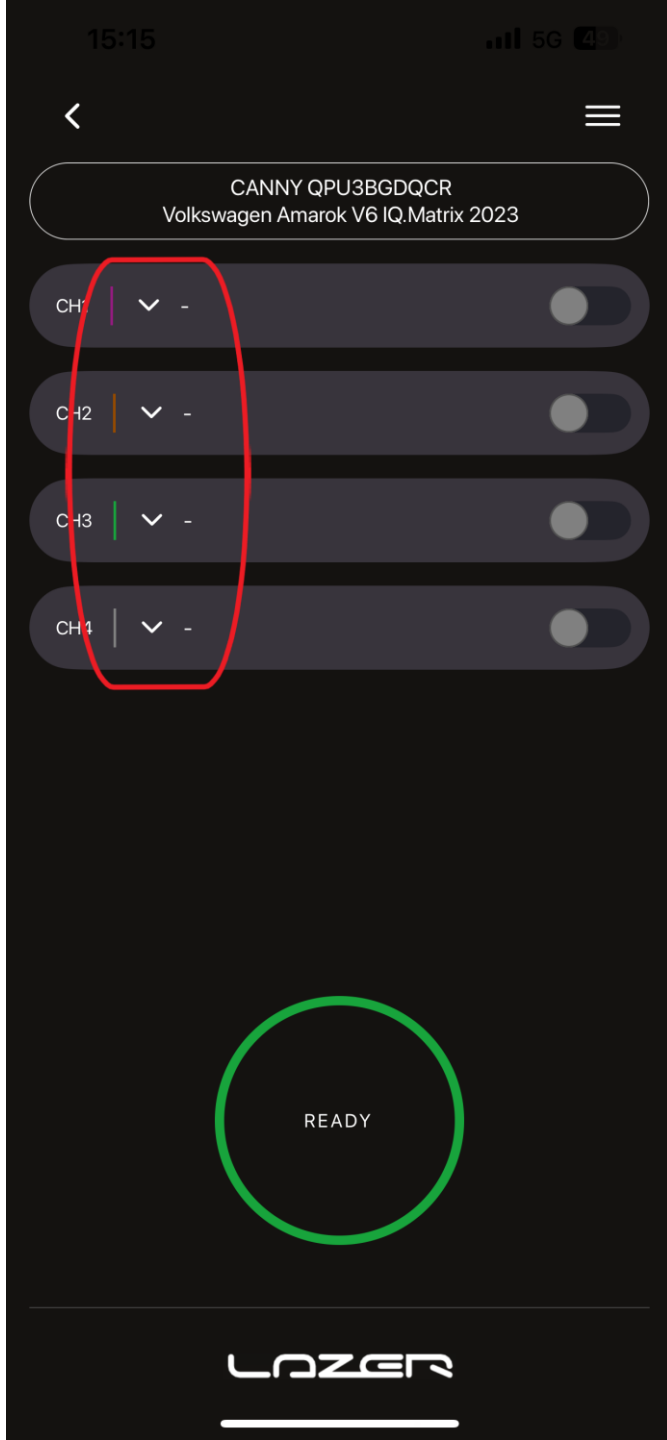
Please now press OK, then completely close the CANNY app on your device.



Reload the app, back to the home screen.

Go to setup your CANNY device as a new device again.

Do not search the paired devices menu as you will not be able to reconnect this way.



After selecting the vehicle you are using CANNY on, and going through the Bluetooth upload, you will be greeted with the 4 output channels.

These can now be configured to the function you need. High beam, Ignition, Position light etc.

If you have any issues at this stage, please email [technical@lazerlamps.com](mailto:technical@lazerlamps.com) and we will do our best to assist.